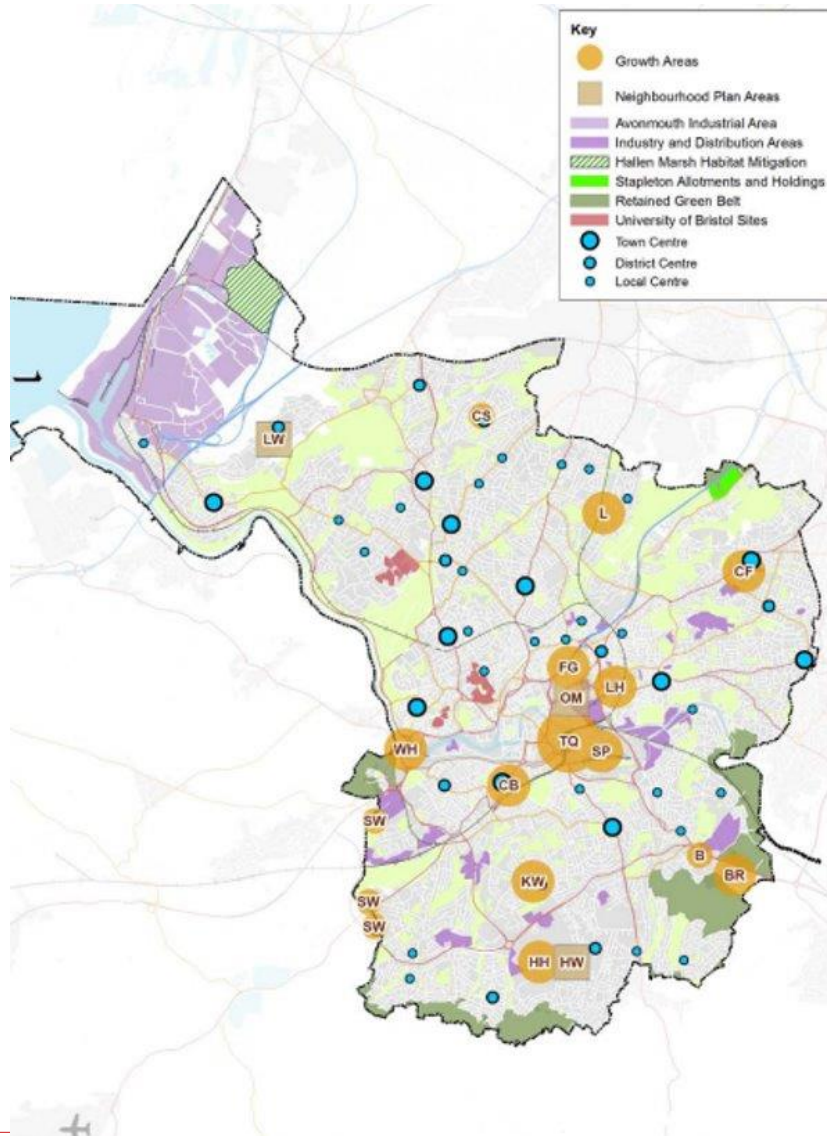




# Regeneration Service



# 14 Areas of Growth & Regeneration



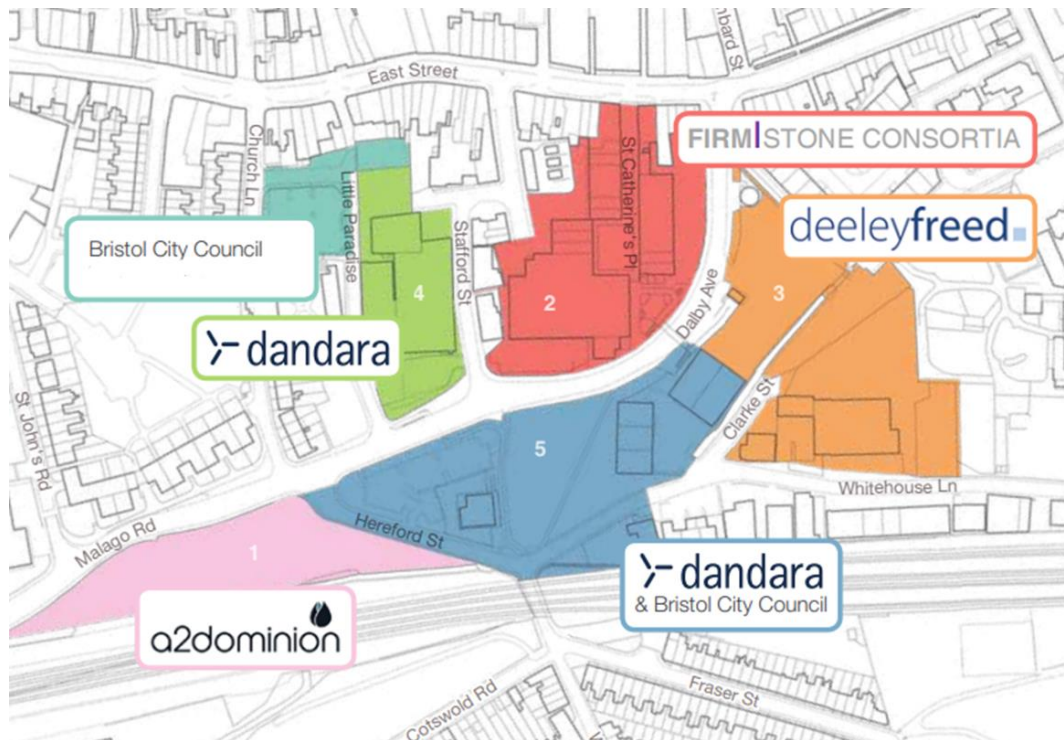


# Bedminster Green Regeneration



# Growth in Bedminster Green

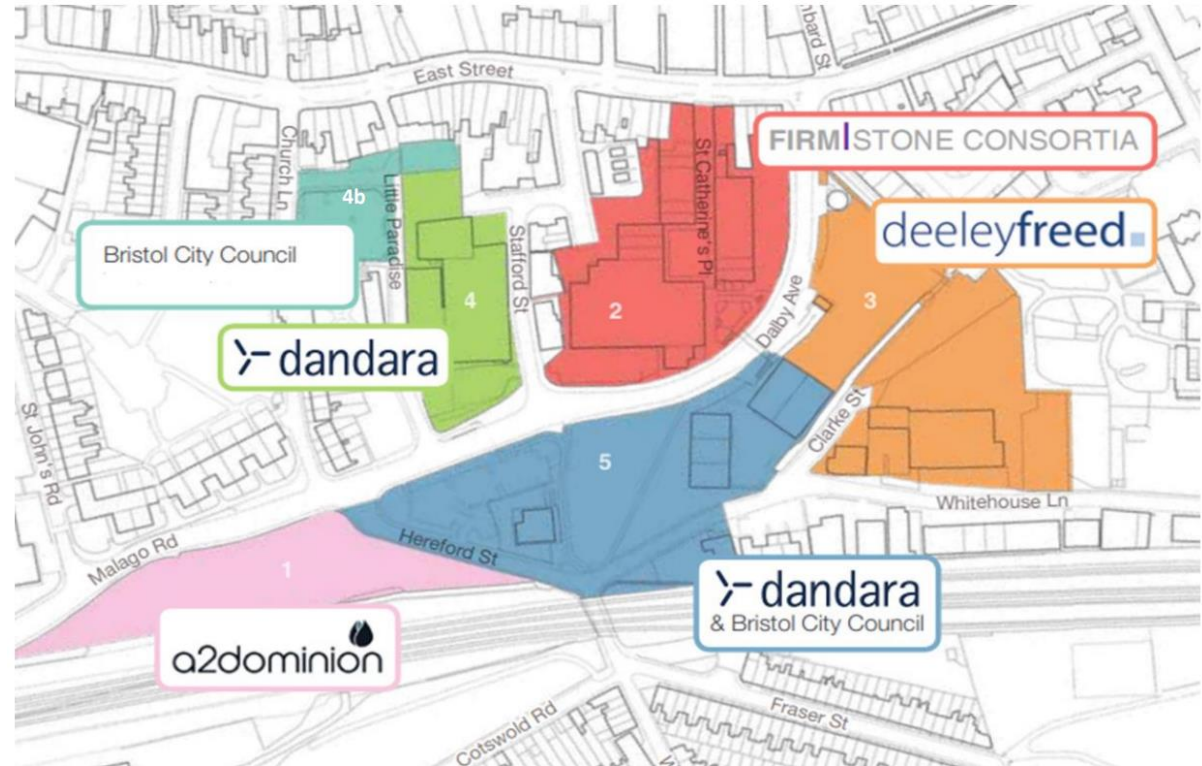
- Approx. 2,000 new homes, including c800 - 1,200 student units
- c2,100sqm commercial space



- New multi-storey car park
- Financial contributions towards:
  - 6 Electric Vehicles Car Club;
  - cycle infrastructure;
  - refurbishment of Victoria Park Lodge;
  - new café and staff welfare facilities in Victoria Park
- Supporting infrastructure - highway and river restoration works
- Improved resilience to flood and other extreme weather events
- Increased footfall to East St

# High level programme update

- District Heat Network and Highways / Public Realm improvements along Malago Rd/Dalby Ave commenced in January 2022
- Construction of new homes commencing Summer 2022 beginning with plots 2, 3 and 4
- Timescales of plots 1 and 5 to be determined





# BCC infrastructure projects

## Bedminster Green - Overview of all Transport and River Restoration Proposed Improvements



# District Heat Network

## Building a low carbon Bristol

Introducing cutting-edge infrastructure to improve our city.

### What's happening?

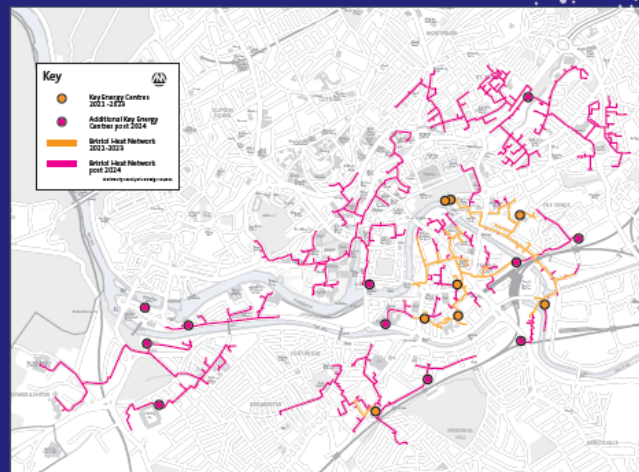
We're busy installing Bristol's Heat Network - a new network of underground pipes that will deliver affordable, low-carbon heat and energy across the city. Our Heat Network is divided into different sections that cover areas across the city with each section powered by a local energy centre.

### Why do we need it?

To play our part in the fight against climate change, Bristol has committed to becoming a carbon neutral city by the year 2030.

The development of Bristol Heat Networks will be the key to achieving this goal by providing local businesses and homes with heat and energy from low carbon sources.

These works form part of a major programme of infrastructure investment and we're minimising disruption by linking the installation of heat pipes with other major developments in the area.



### Where can i find out more?

Visit: [energyservicebristol.co.uk](https://energyservicebristol.co.uk)



ENERGY  
SERVICE  
BRISTOL

In partnership with:



BRISTOL  
heat networks

BRISTOL  
city leap

BRISTOL  
ONE CITY



# Highway and Public Realm



*Upgraded bus stop, new northbound bus lane, new trees and low-level plants*



*New repositioned pedestrian and cycle crossing, to link the Malago Greenway directly to East St by way of Stafford St*



*Upgraded walking and cycling access, including a two-way protected route to provide missing link between existing cycle routes*



# River Restoration



*The Green with the river in low flow*



*The Green with the river in high flow*



*Boardwalk platform overlooking the river*

# Funding

Cabinet Nov 2021 approved up to £14.3m (CRSTS and SCIL) to deliver:

- Highways and public realm improvements
  - River Malago Restoration project
  - Contribution towards new Parks building in Victoria Park
-

# Next Steps

- Monitor traffic changes in place to enable District Heat Network and Highways / Public Realm improvement works from January 2022 until Summer 2024
  - Support developer partners to start on site at Plot 4, 2 & 3
  - Plot 5 Planning Application
  - Develop a site wide Public Art & Employment Strategy
  - River Restoration Planning Application
  - Increase internal BCC capacity to co-ordinate construction/delivery and minimise disruption to local residents, and deliver on opportunities to ensure local residents and wider area benefit from regeneration
-



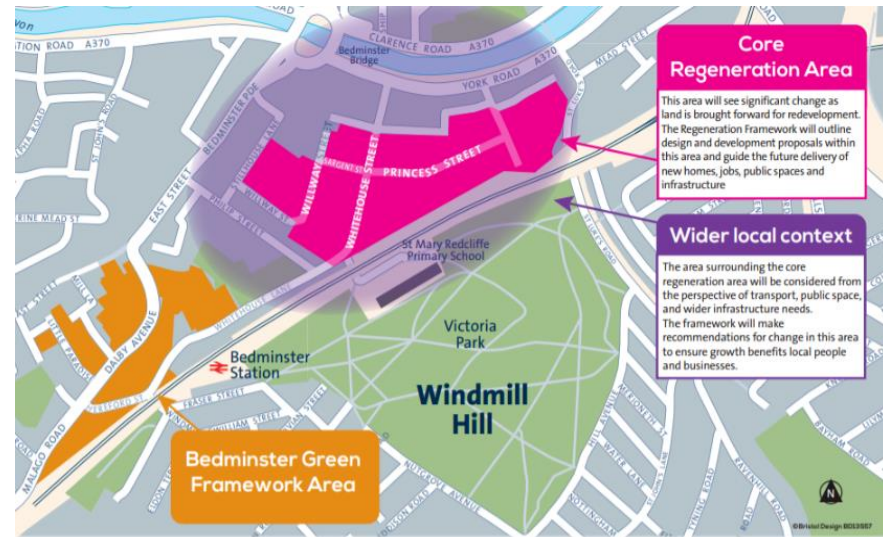
# Whitehouse Street Regeneration Framework



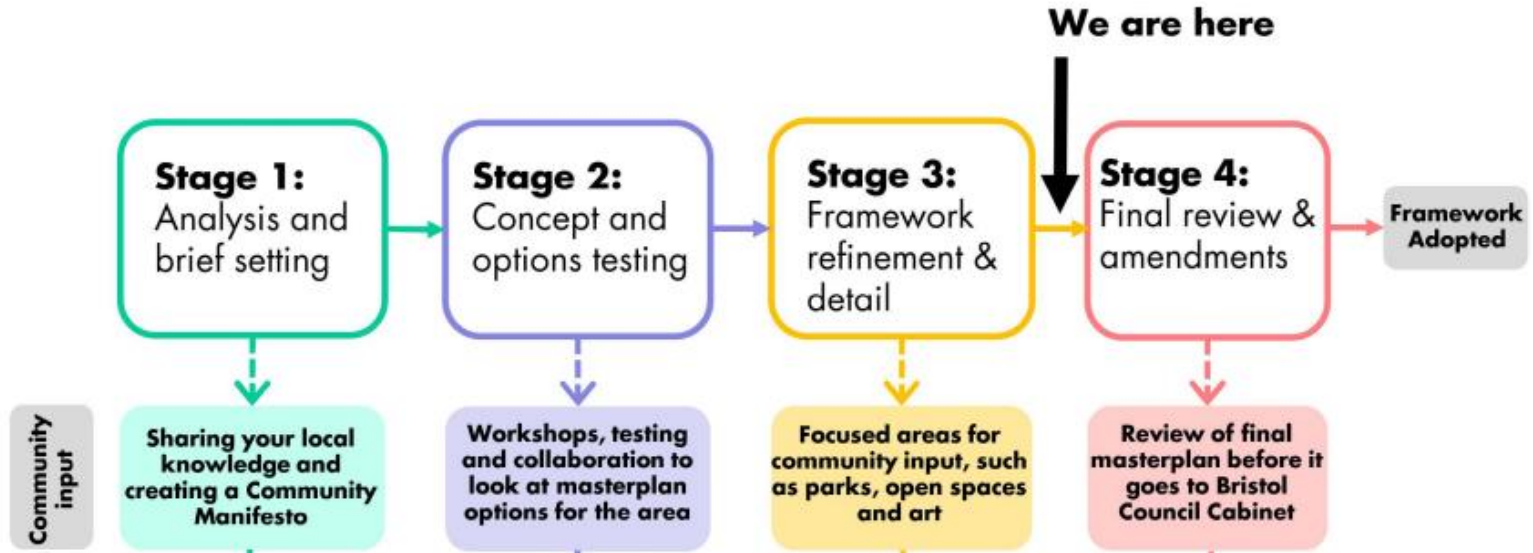


# Development of Regeneration Framework

- Partnership between three main landowners – BCC, Galliard Apsley and Hill Residential Group
- Framework will set out the vision for the area, looking at comprehensive and co-ordinated regeneration of a predominantly industrial area
- Regeneration will support strategic city objectives with mixed-use, residential led redevelopment
- Determining employment strategy for the area is key to unlocking sites for redevelopment
- Framework will identify infrastructure required to support growth
- Principles for responding to the climate and ecological emergencies will be embedded in the Framework



# Where we're up to



- Community Manifesto and Scope of Community Influence published
- Engagement events throughout Stage 1 and 2, with first in-person event held in Sept 2021 and attended by over 50 local residents and businesses
- Bespoke Employment Land Strategy for the area being developed
- Initial draft of Framework being reviewed by landowners and BCC officers
- Framework consulted on in Spring 2022 and considered by Cabinet thereafter

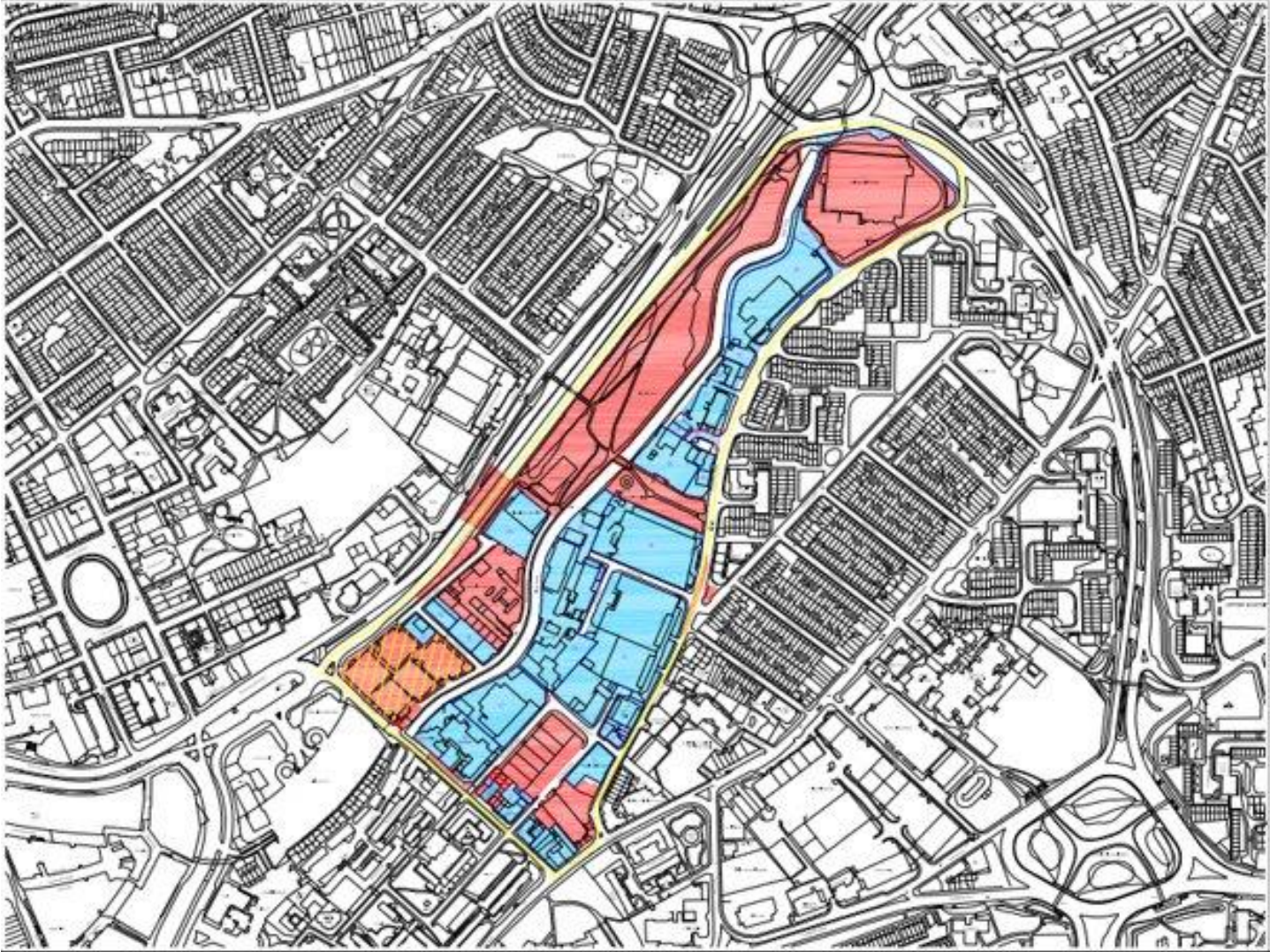


# **Frome Gateway Spatial Regeneration Framework + Infrastructure Delivery Plan**





# Where is Frome Gateway?





# Where is Frome Gateway?



# What are we doing?

- Main outputs:
  1. **Spatial Regeneration Framework + Infrastructure Delivery Plan**
  2. **Endorsement by BCC Cabinet (circa spring 2023)**
  3. **Infrastructure funding to support enabling development (CIL or similar)**
  4. **Phase 1 River Frome Restoration Outline Business Case (lead by BCC Flood Risk)**

*...the long-term transformation of the area to accommodate new homes, jobs and infrastructure to support Bristol's growing population and economy*

---

# What is the Frome Gateway Regeneration Programme?

The Frome Gateway Regeneration Project is an opportunity to....

- ...deliver circa 1,000 new **homes** including affordable housing
- ...improve **workspaces** and grow the city's economy
- ...restore and enhance access to the **River Frome**
- ...deliver **inclusive growth** and reduce inequality
- ..establish a bold and ambitious response to the **climate and ecological emergencies**
- ...foster social integration and **community cohesion**
- ...bring forward three BCC owned sites to deliver new homes, workspaces and community amenities.
- ...work with the community to **build upon existing assets**



# Frome Gateway Place Principles

## Frome Gateway

### Place Principles from first stage of community engagement

#### **New homes, community space and places for work and leisure**

- Meeting local housing needs – affordable, families, young people and older generations
- Open to alternative, community and eco housing
- Diverse range of jobs – small businesses, independents and local
- Protecting and providing new youth, community and cultural assets, including healthcare/childcare

#### **Mixing old and new**

- Communities
- Jobs
- Protecting and reusing historic assets

#### **Opening up access to the River Frome**

- Create paths to provide waterside access and enjoyment of nature
- Access to a long walking and cycling route to Eastville Park and Snuff Mills (Frome Valley walkway)

#### **Environmentally sustainable and healthy neighbourhood**

- Retain, enhance and increase open green spaces
- Create a community garden
- Climate and flood resilient, improve air quality, carbon neutral

#### **Friendly and safe streets and spaces for all**

- Clean and safe streets, destination spaces and better lighting
- Better use of roads around the area, especially Pennywell Road

#### **Better connectivity and transport**

- Connecting the communities of St Pauls and St Judes
- Better walking, cycling routes, access to public transport

#### **An attractive entrance to central Bristol**



# Project approach and programme

- Framework development to be led by BCC's Strategic Partner ( AMHH design and Motts technical lead) with a significant range of inputs from BCC Services.
- PRD to produce bespoke Employment Land & Skills Strategy
- BCC Project Manager for oversight and internal coordination.
- Front-loaded engagement programme to involve community early and throughout

Stage	Timeframe
SRF Stage 0: Project Initiation	Throughout 2021
SRF Stage 1: Site analysis and brief refinement	Throughout 2022 (programme under development)
SRF Stage 2: Concept and options testing	
SRF Stage 3: Framework refinement and detail	
SRF Stage 4: Formal public consultation (6 weeks)	
SR Stage 5: Finalisation of framework	
SRF Stage 6: Cabinet endorsement	Early 2023
Planning applications / funding bids	2023
Delivery / construction	2024/5 onwards



# Western Harbour



# Western Harbour





# Western Harbour Engagement





# Western Harbour Engagement





# Western Harbour Engagement



# Western Harbour Engagement



About the project

Interactive map

Programme

Stay in touch

FAQs

Social

**Interactive map** [X]

We are looking for your thoughts on the Project Area (highlighted in red) which has council owned land.

- What does this area need more than anything else?
- What are your hopes for the area?

Find a place by typing it here

+ Add a comment

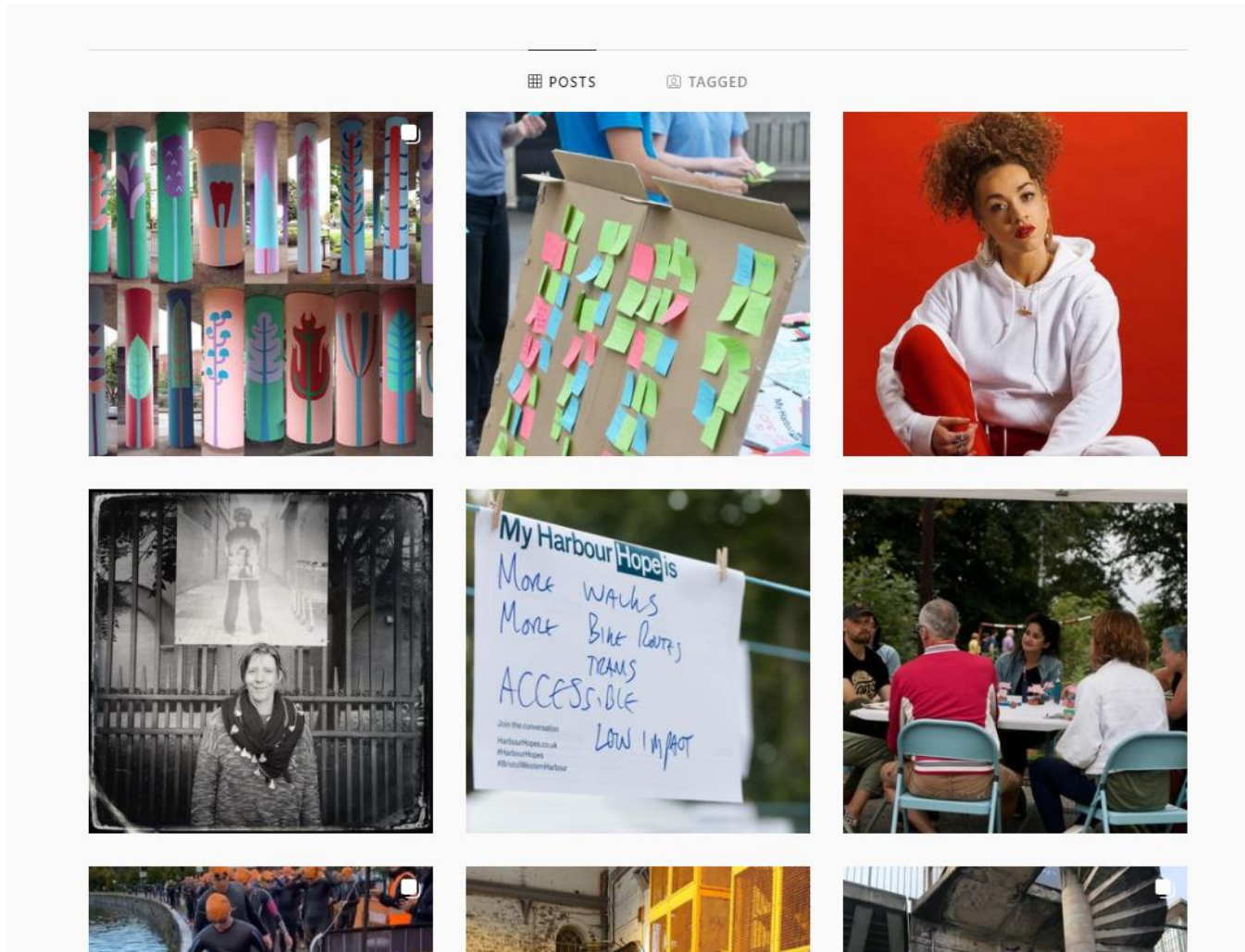
Change map view

Google

The image shows an interactive map interface. On the left, a text box contains a question and two bullet points. The map itself is an aerial view of a city area with a river. A red outline highlights a specific area along the riverbank. Several green circular markers with numbers are scattered across the map. On the right side of the map, there are search and navigation controls, including a search bar, a location pin, and zoom in/out buttons. A green button labeled "+ Add a comment" and a white button labeled "Change map view" are positioned at the bottom right of the map area.



# Western Harbour Engagement





# Western Harbour Next Steps

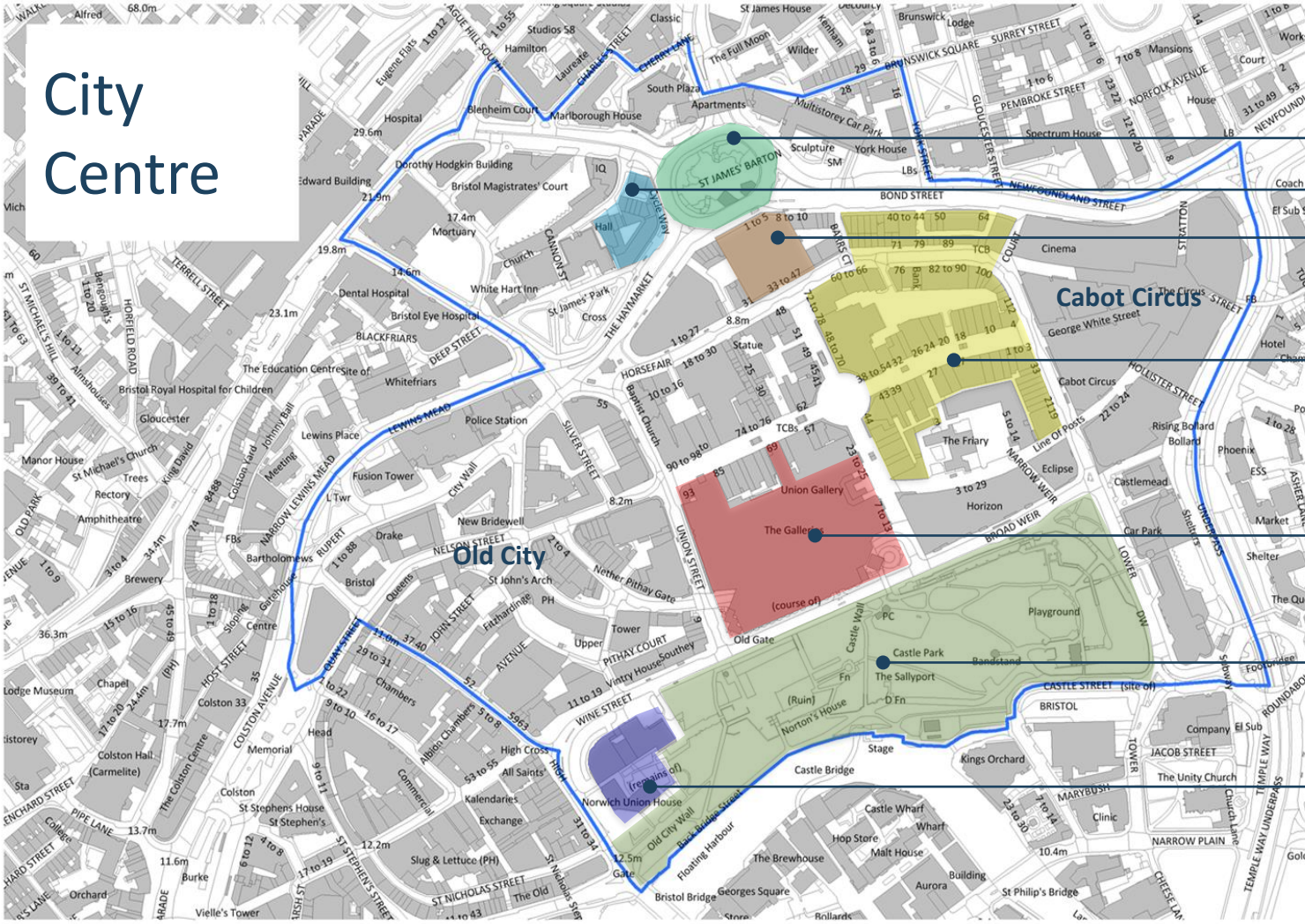
- Consult on draft Western Harbour Vision
  - Seek Cabinet Approval for Vision & next phase of project
  - Secure WECA funding for Masterplan & Delivery Strategy
-



# City Centre Development & Delivery Plan



# City Centre



- St James' Barton
- Haymarket
- Debenham
- Cabot Circus
- Callowhill Court
- Galleries
- Castle Park
- St Mary Le Port



# St James Barton Roundabout





# Castle Park



# St Mary Le Port





# Galleries



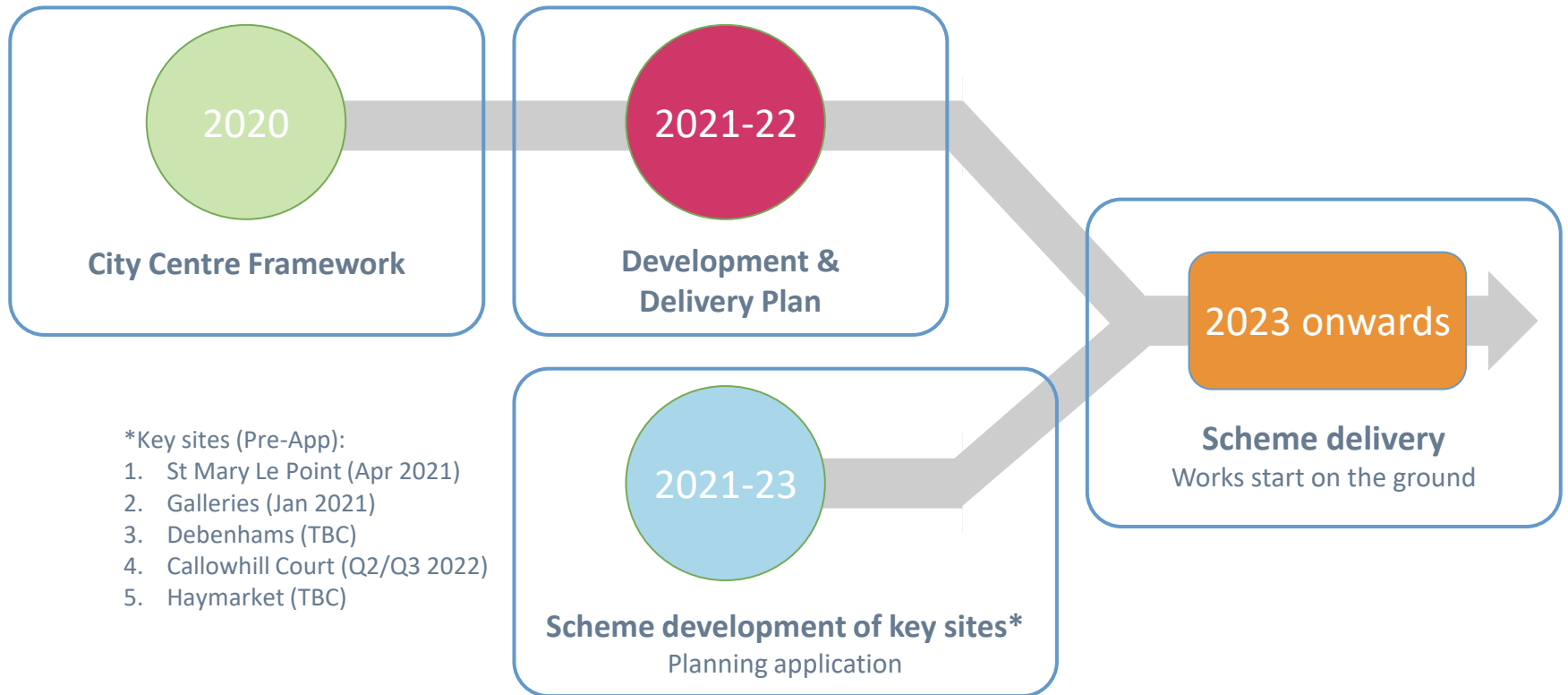
# Debenhams





# Timeline

We are **HERE**



\*Key sites (Pre-App):

1. St Mary Le Point (Apr 2021)
2. Galleries (Jan 2021)
3. Debenhams (TBC)
4. Callowhill Court (Q2/Q3 2022)
5. Haymarket (TBC)