

# Bristol Neighbourhood Planning Network

18<sup>th</sup> March – 24<sup>th</sup> May 2019

## Areas of Growth and Regeneration



### Bristol Local Plan Review

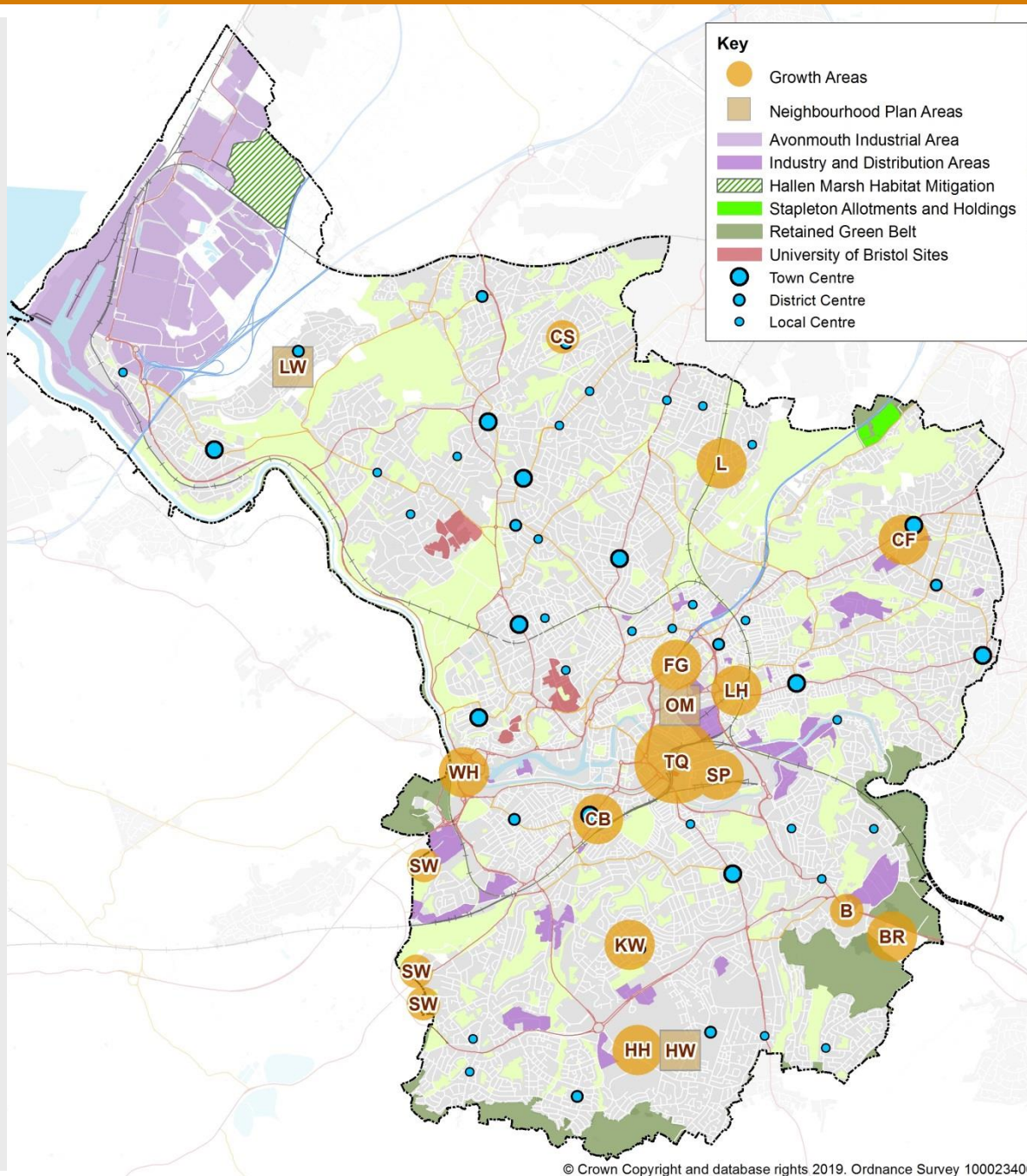
Draft Policies and Development Allocations



Consultation - March 2019

## Areas of growth and regeneration :

- Bristol City Centre
- Bristol Temple Quarter
- St Philip's Marsh
- Frome Gateway
- Western Harbour
- Lawrence Hill
- Central Fishponds
- Central Bedminster
- Knowle West
- Hengrove Park
- Brislington
- Bath Road, Brislington
- South west Bristol
- Lockleaze
- Central Southmead



# Areas of growth and regeneration

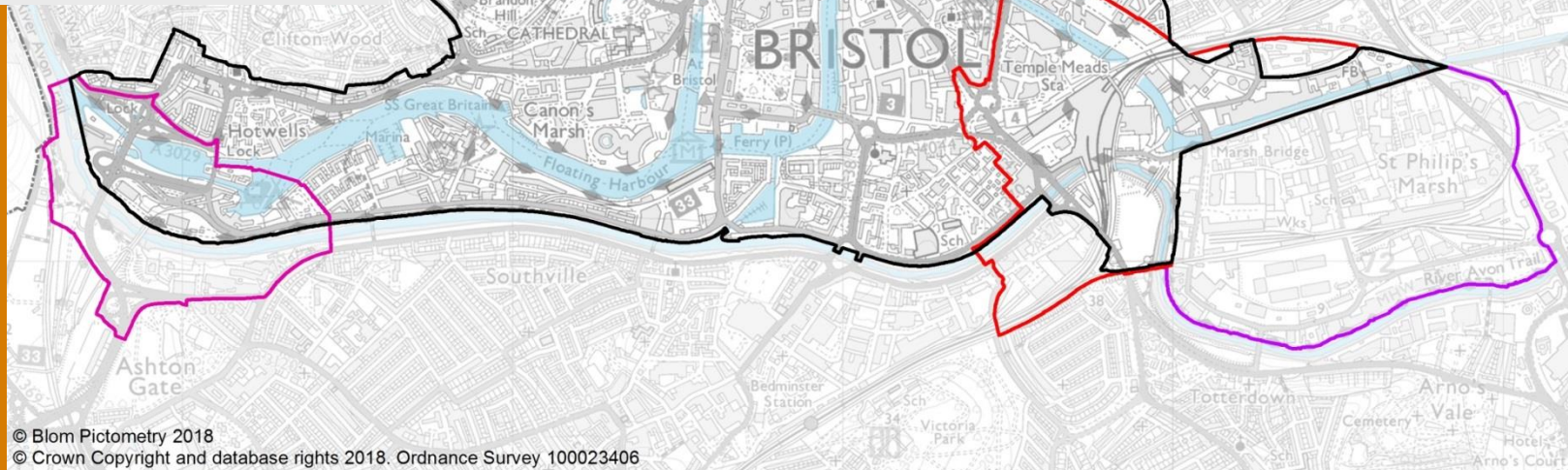


Consultation - March 2019



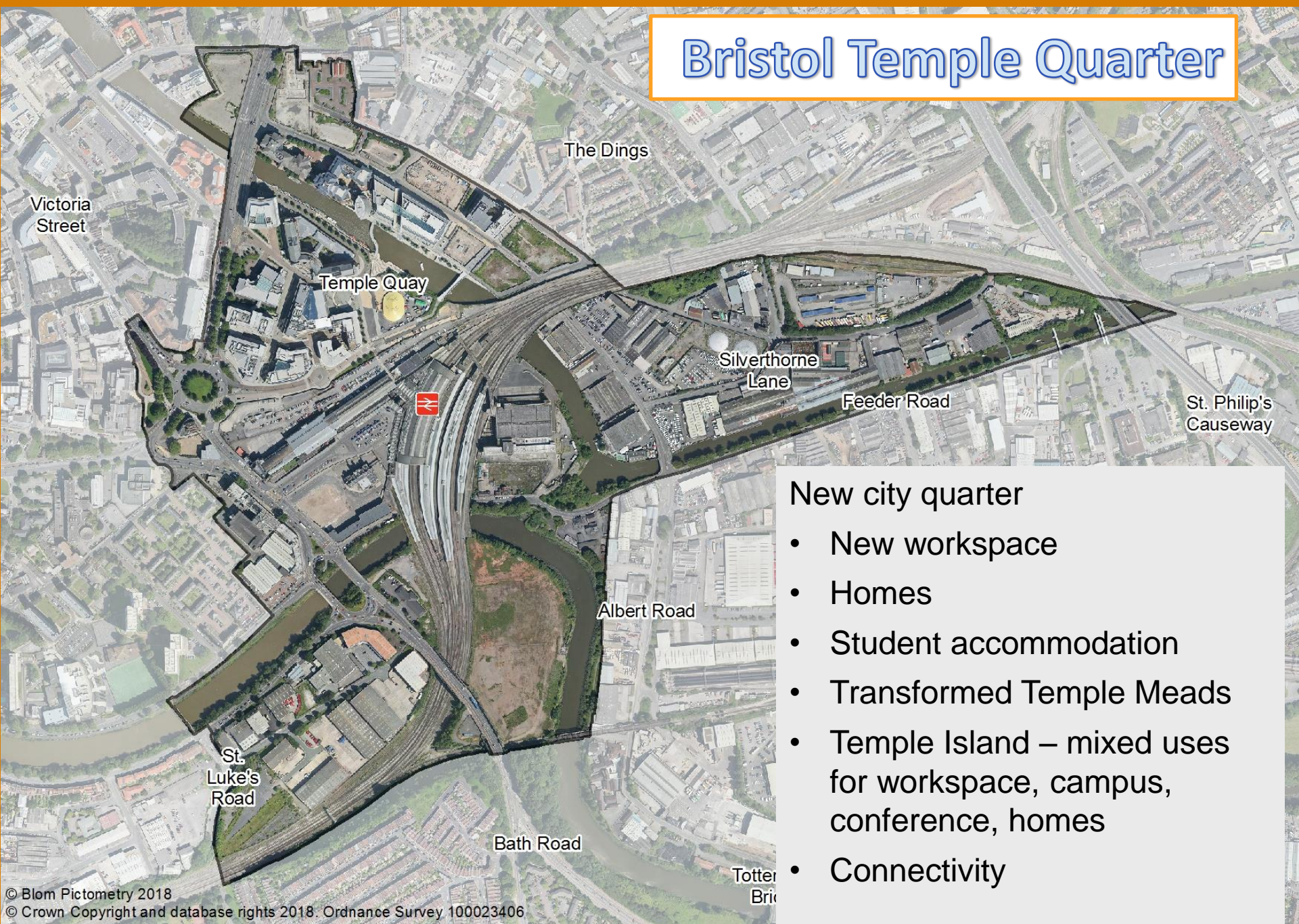
- Strengthen and promote city centre as the centre of global city
- Offices/workspace, retail, homes, leisure, tourism, entertainment, arts.
- Higher densities, diversification of uses, especially in an around Broadmead
- Welcome to all, social inclusion and community cohesion

## Bristol City Centre





# Bristol Temple Quarter



## New city quarter

- New workspace
- Homes
- Student accommodation
- Transformed Temple Meads
- Temple Island – mixed uses for workspace, campus, conference, homes
- Connectivity



# St. Philip's Marsh



Mixed uses in a regenerated city quarter:

- Workspace
- Homes
- Industry
- Student accommodation
- More jobs than now
- Greenway along river



## New Western Harbour quarter:

- Re-configured road system
- 2,500 homes
- 500 student bed spaces
- Workspace
- Open space



# Western Harbour



# Frome Gateway

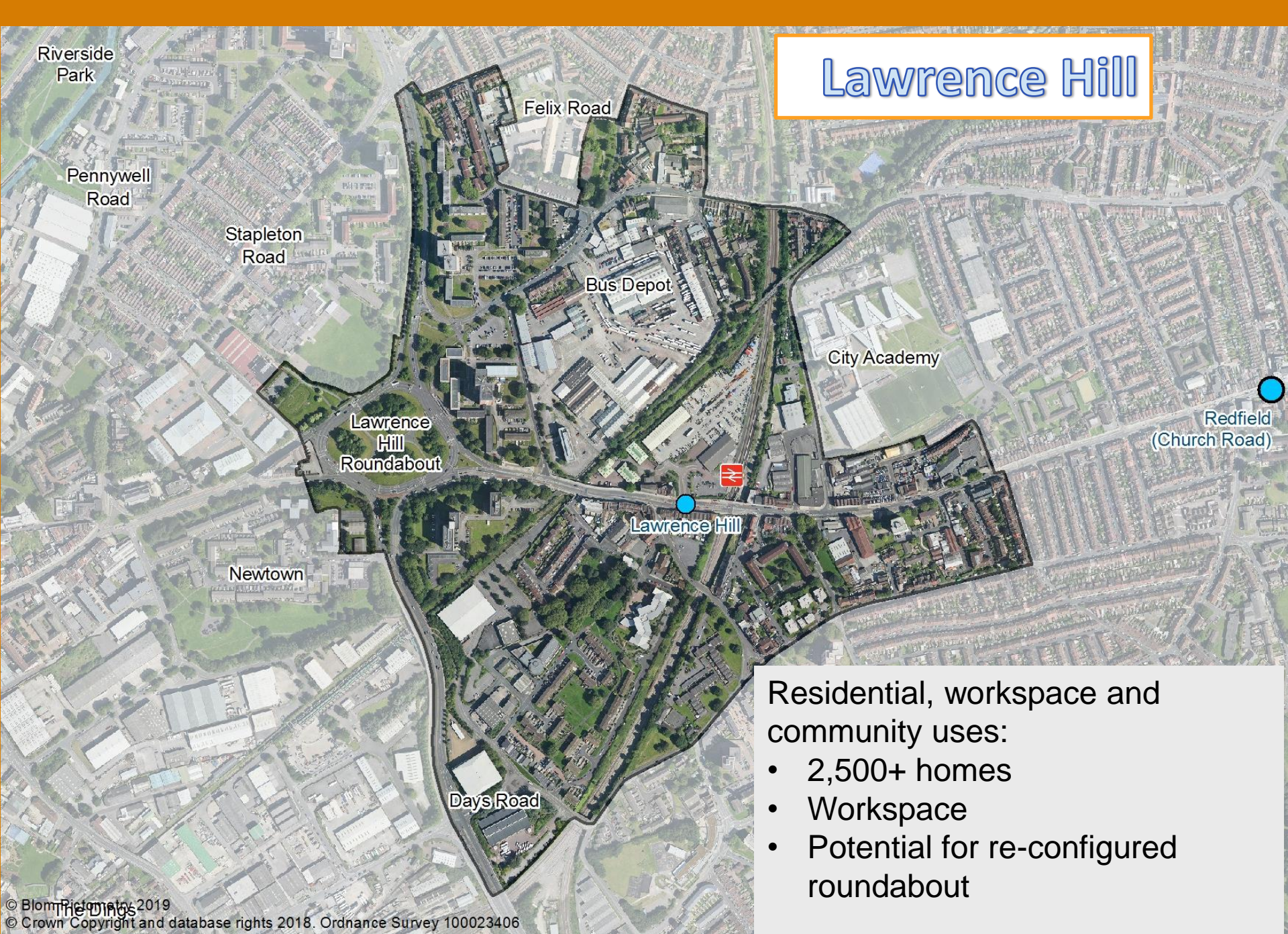


Regenerated central city mixed use neighbourhood:

- 1,000+ homes
- Workspace
- 500 student bed spaces
- Enhanced river corridor



# Lawrence Hill



Residential, workspace and community uses:

- 2,500+ homes
- Workspace
- Potential for re-configured roundabout



# Central Fishponds



Residential, workspace and community uses

- 1,500 homes
- Workspace
- Mixed uses